



MARGARET EGAN

## ARTIST'S STATEMENT

The work in this show continues to explore the conflicts of life and nature with all its beauty and rawness. Landscape has always intrigued me, its deep roots finding their way through so many layers of history and each layer containing its own story is fascinating, I want to reach down into it, to feel its power and serenity to explore all its layers.

The link between landscape and figurative is different and yet the same, the complexity of people with all their layers, is equally intriguing and I try to find a way to show a moment in time when the true story of life is revealed. In this show the two sit comfortably together.

Front Cover picture: THE SOULS ESCAPE *Acrylic/Linen* 44" x 40"

Back Cover picture: THE UN-READ VISION *Acrylic/Linen* 44" x 40"

T H E  
BARBARA STANLEY GALLERY  

---

I R I S H C O N T E M P O R A R Y A R T

invites you to the preview of an Exhibition of new paintings by

MARGARET EGAN

Wednesday 7th October  
in the presence of the artist  
6.00–8.30pm

RSVP

The exhibition continues until 7th November

Gallery open

Sunday and Monday by appointment Tuesday to Saturday 11am – 6pm

View the entire exhibition at [www.irishartinlondon.com](http://www.irishartinlondon.com)



LOST IN SOUND *Acrylic/Linen* 40" x 44"



GREYSTONES, CO. WICKLOW *Acrylic/Canvas* 16" x 20"



NEAR BRAY, CO. WICKLOW *Acrylic/Canvas* 16" x 20"



THE WILD SILENCE *Acrylic/Linen* 40" x 44"



WEAVING NOTES *Acrylic/Linen* 26" x 30"



DUBLIN HILLS *Acrylic/Linen* 26" x 30"



DUN LAOGHAIRE *Acrylic/Linen* 26" x 30"



UNSPOKEN WORDS *Acrylic/Linen* 5" x 34"



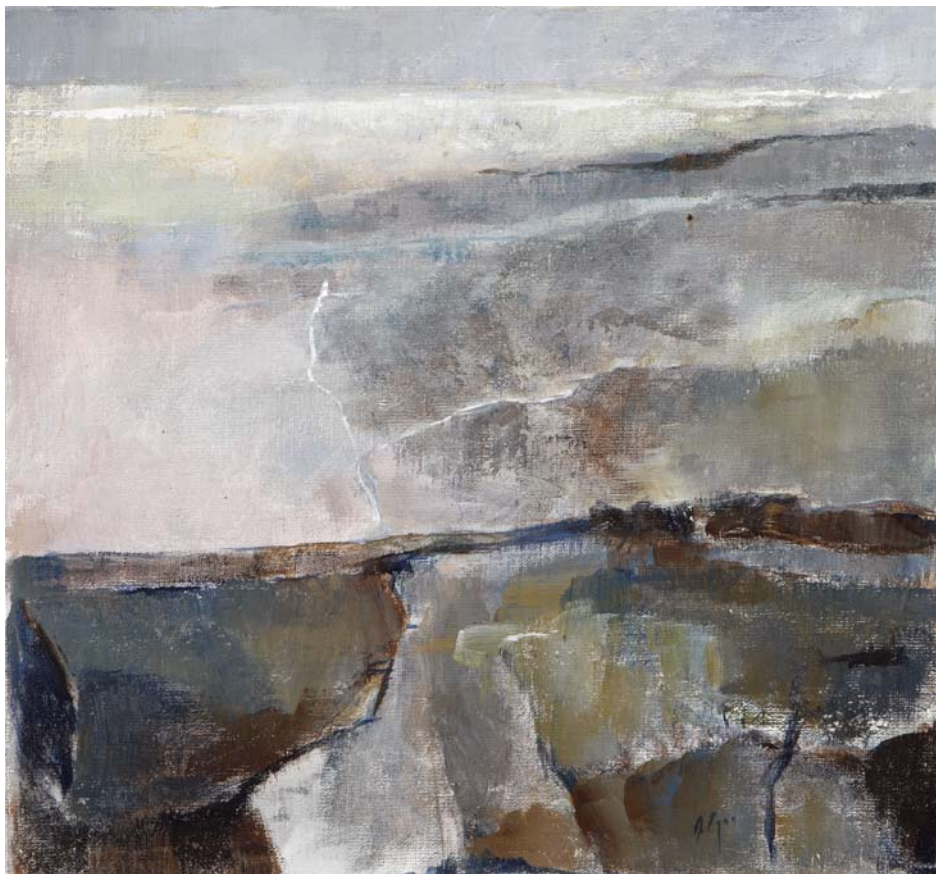
WHITE BOATS *Acrylic/Cotton* 10" x 12"



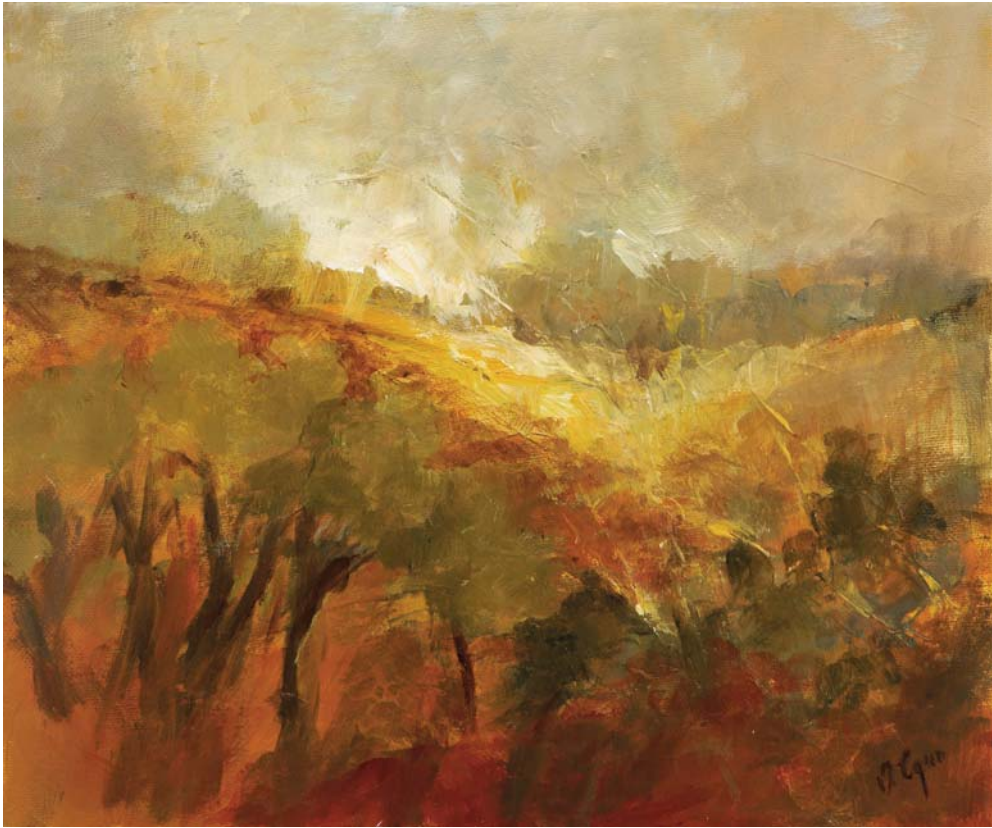
WINTER SKIES *Acrylic/Linen* 26" x 30"



LADIES COVE, CO. DONEGAL *Acrylic/Linen* 26" x 30"



SANDYMOUNT STRAND *Acrylic/Canvas* 16 3/4" x 18"



OLIVE GROVE *Acrylic/Canvas* 10" x 12"



AUTUMN BOG *Acrylic/Linen* 26" x 30"



WICKLOW WAY *Acrylic/Linen* 26" x 30"



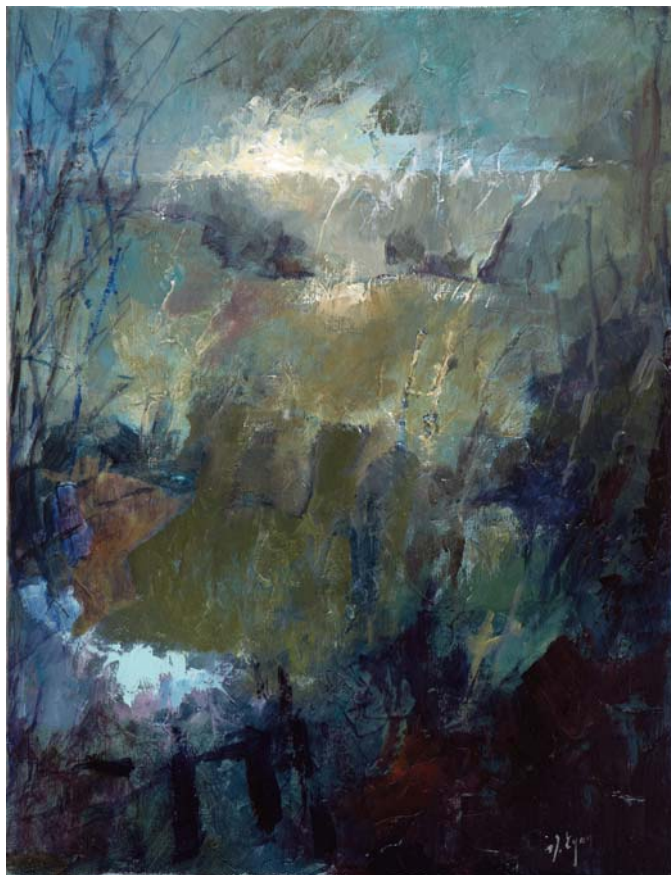
BRITTAS, WEST WICKLOW *Acrylic/Cotton* 10" x 12"



SANDYMOUNT STRAND II *Acrylic/Canvas* 14" x 18"



PINK HAT *Acrylic/Linen* 26" x 30"



WINTER FIELDS *Acrylic/Canvas* 14" x 18"

## MARGARET EGAN

- 1967–69 Studied at National College of Art & Design,  
Dublin
- 1963–67 Studied with Breton sculptor Professor Yann  
R. Goulet RHA

### SELECTED SOLO EXHIBITIONS

- 2009 The Barbara Stanley Gallery, London
- 2008 Solomon Gallery, Dublin
- 2007, 05, 03 Courcoux & Courcoux, Stockbridge
- 2006 Solomon Gallery, Dublin
- 2004 Origin Gallery, Dublin
- 2002 Ashford Gallery, Royal Hibernian Academy,  
Dublin
- 2001 Salle de la Mairie de Bargehon, France
- 2000, 1997 Guinness Gallery, Dublin
- 1999 The Leinster Gallery, Dublin
- 1998 The Lavit Gallery, Cork
- 1994 Wexford Arts Centre, Wexford
- 1994 Marymount Manhattan College Gallery,  
New York

### SELECTED GROUP EXHIBITIONS

- 2002–06 Solomon Gallery, Dublin
- 2005, 04, 03 Eigse, Carlow
- 2004, 03 Lavit Gallery, Cork
- 2003 Leinster Gallery, Dublin
- 1993–97, 86–88, 84 RHA Annual Exhibition, RHA, Dublin
- 1997 Kent Gallery, Kinsale, Cork
- 1996 Cork Arts Society, Lavit Gallery, Cork
- 1995 Nancy Roche Gallery, Singapore
- 1995, 94 Oriel Gallery, Dublin
- 1994 Portable Art Phase II, Cardiff
- 1994 The United Arts Club, Dublin
- 1994, 93 The Kenny Gallery, Galway
- 1993 Oireachtas, RHA Gallagher Gallery, Dublin
- Wexford Arts Centre, Wexford
- Touring two person exhibition (sponsored by  
the Abbey Theatre, Dublin)
- 1991 National Maritime Museum, Dun Laoghaire,  
Dublin
- Malton Gallery, Dublin

### COLLECTIONS

- United Beverages, Dublin
- United Drugs Plc., Dublin
- Inchoney Hotel Clonakilty, Co. Cork
- An Bord Pleanala, Marlborough St., Dublin
- Marymount Manhattan College, New York

T H E  
BARBARA STANLEY GALLERY  
IRISH CONTEMPORARY ART



279 Upper Richmond Road, Putney, London SW15 6SP  
Tel: 020 8789 8088 [www.irishartinlondon.com](http://www.irishartinlondon.com) email: [barbara.stanley@tiscali.co.uk](mailto:barbara.stanley@tiscali.co.uk)